

TABLE A – TAPER LENGTHS		Regulatory Speed Limit before Work Begins (km/h)											
Taper Types (m)		≤ 50	60	70	80	90	100	110	120				
Merge Taper Length	1/4	35	55	100	190	210	230	250	280				
Lane Shift Taper Length	1/4	30	50	80	100	110	120	130	140				
Downstream Taper Length	1/4	30	30	30	30	30	30	30	30				
TCP, Signal, and Shoulder Taper Length (min. 5 devices)	1/4	5	8	15	15	15	15	15	15				
Minimum Tangent Length between Tapers	1/4	30	60	160	190	210	230	250	280				
Run-in Length on Centreline	1/4	40	50	60	60	70	80	90	100				

TABLE B – DEVICE SPACING LENGTHS		Regulatory Speed Limit before Work Begins (km/h)											
Device Spacing (m)		≤ 50	60	70	80	90	100	110	120				
Construction Sign Spacing	A	40	60	80	100	150	150	200	200				
Buffer Space	B	30	40	60	80	110	140	170	200				
Channelizing Device Spacing for Tapers	C	10	10	15	15	15	15	15	15				
Channelizing Device Spacing on Curves and Tangents	D	10	10	30	30	40	40	40	50				

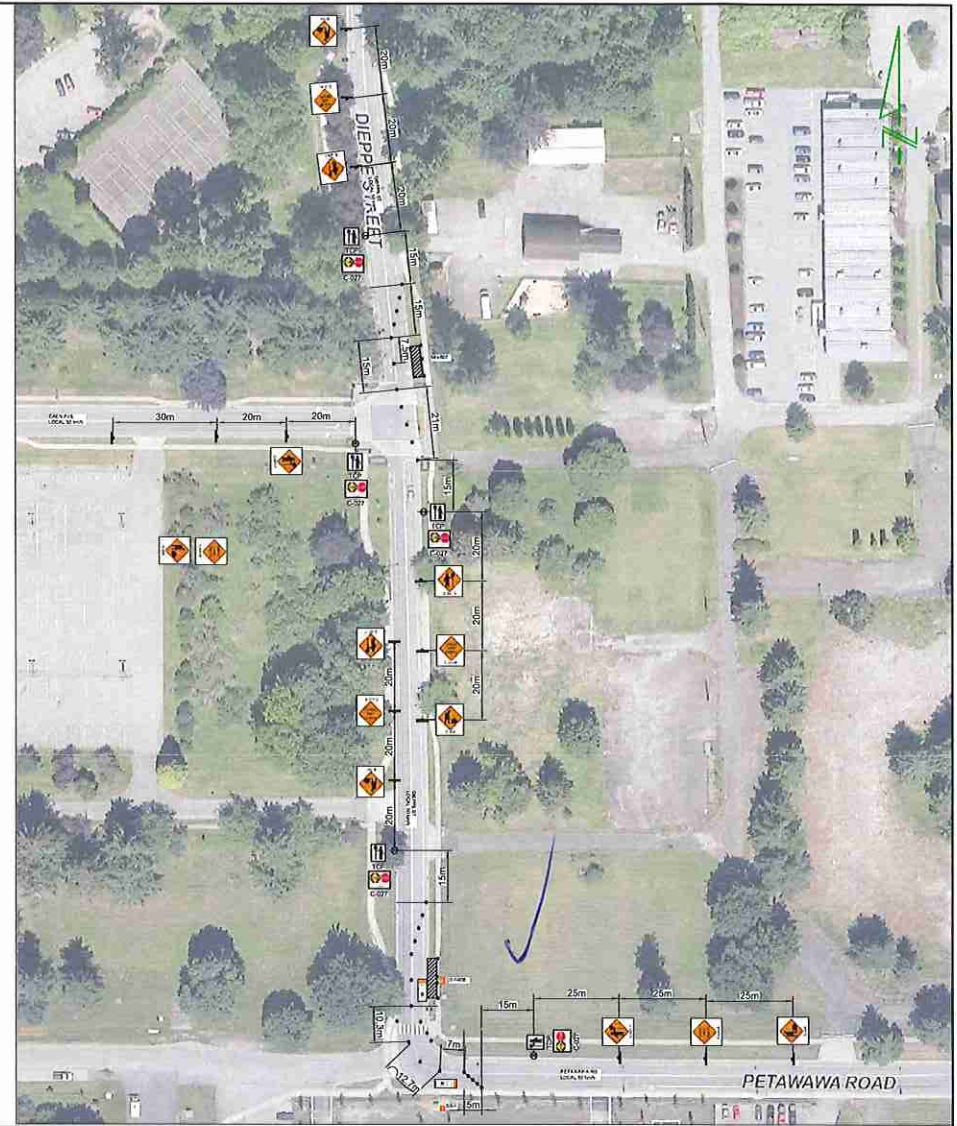
LEGEND			
	Flexible Drum		Paint Truck
	Tubular Marker		Escort Truck
	Cone		Chaser Vehicle
	Sign		Vehicle Mounted Rear Crash Attenuator
	Traffic Control Person		360° Flashing Light
	Work Activity Area		Portable Traffic Signal
	Work Truck		Barricade and Fencing
	Shadow Vehicle		Flashing Arrow Board (FAS)
	Shadow Vehicle #1		Flashing Arrow Board (FAS) in caution mode
	Shadow Vehicle #2		Dynamic Message Sign (DMS)
	Buffer Vehicle		

NOTES:

1. THE WORK REQUIRING THE TRAFFIC CONTROL MEASURE INVOLVES THE PLACING AND SPLICING OF FIBER OPTIC CABLE FROM MH-607 TO 45504 PETAWAWA RD VIA SV-608 & SB-1. THE DURATION OF USE OF THIS MEASURE WILL BE UNTIL THE WORK IS COMPLETED.
2. LANE CLOSURES ARE AS NOTED IN THIS LAYOUT.
3. TIMING OF THE WORKS WILL BE FROM 8:30AM TO 4:30 PM.
4. LOCATION OF THE WORK ZONE IS AS INDICATED ON THIS PLAN FOR CONSTRUCTION.
5. THE MEASURES SHOWN IN THIS TRAFFIC MANAGEMENT PLAN IS IN ACCORDANCE TO THE "BC TRAFFIC MANAGEMENT MANUAL FOR WORK ON ROADWAYS (2015 INTERIM)". CHANGES TO THIS LAYOUT MAY BE MADE BY THE TRAFFIC CONTROL PERSON IN CHARGE TO REFLECT FIELD CONDITIONS.
6. PRIORITY ACCESS WILL BE GIVEN TO EMERGENCY VEHICLES.
7. ALL DIMENSIONS ARE IN METRES.

CONTACT INFORMATION:

SHANE BELFRY
778-870-9562

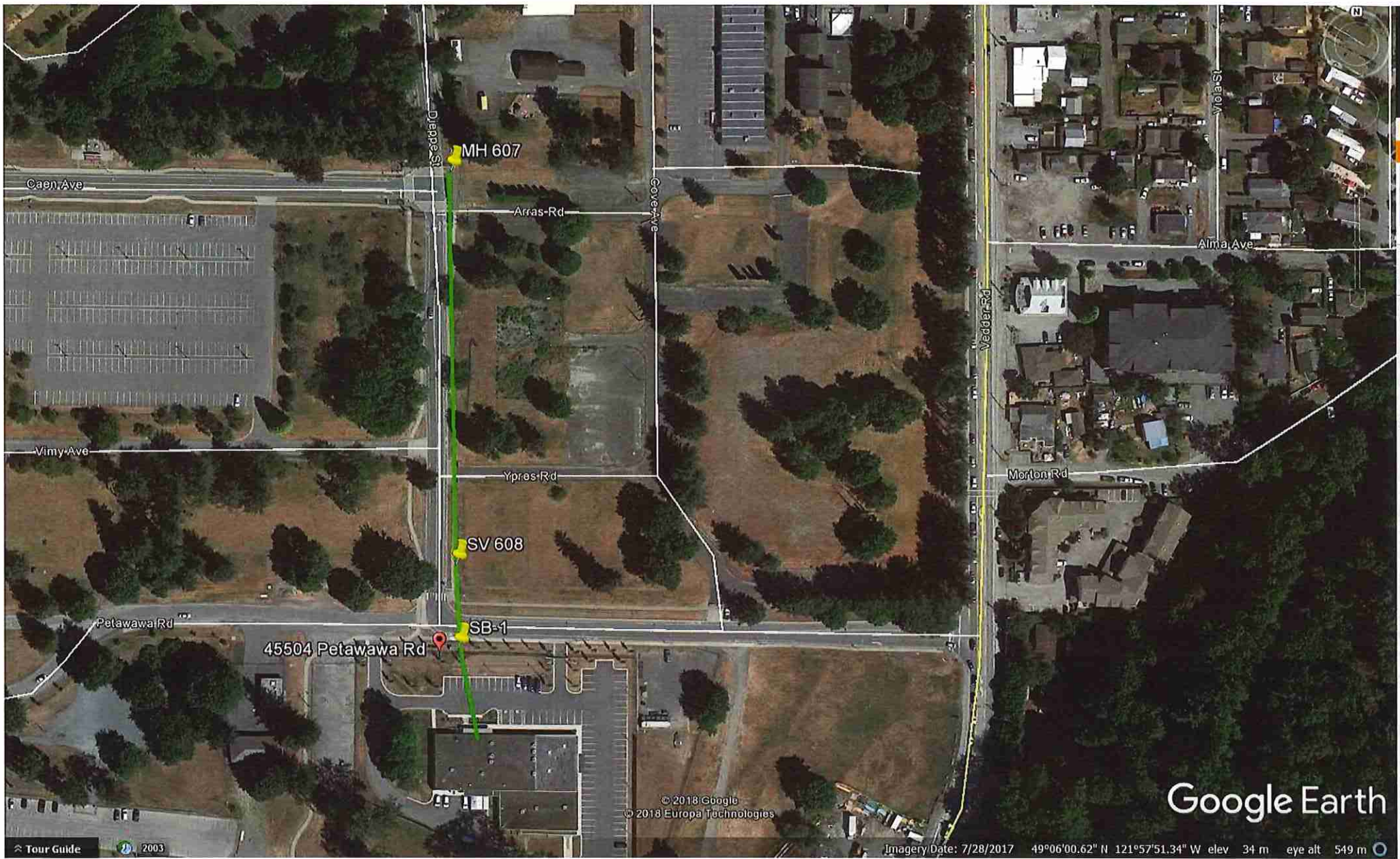


BC ONE CALL
CALL BEFORE YOU DIG
1 800-474-8888
VANCOUVER AREA
604-257-1940



CONSTRUCTION	PERMIT	DESIGN DRAWING	DWG. NO.	DATE
REV. DESCRIPTION	SUBMITTED DATE	604-257-1942	SCALE: 1/8" = 1'-0"	DATE: FEB 19 2019
REV. DESCRIPTION	RE-SUB DATE		ASSOCIATED DRAWINGS	
REV. DESCRIPTION	REV. DATE			
REV. DESCRIPTION	DATE			
REV. DESCRIPTION	AS CONSTRUCTED DATE			
REV. DESCRIPTION	CONTRACTOR			

THE AREA PROPOSED ON THIS DRAWING IS ALL AT ALL TIMES REMAIN THE PROPERTY OF TELUS	
PROPOSED TRAFFIC CONTROL LAYOUT TO ACCOMMODATE TELECOM CABLE PLACING & SPLICING	
45504 PETAWAWA RD (DIEPPE ST), GILLESWACK, BC	SYSTEM NAME: 202204 TCP
	SHEET 1



45504 Petawawa Rd

MH 607

SV 608

SB-1

© 2018 Google
© 2018 Europa Technologies

Google Earth

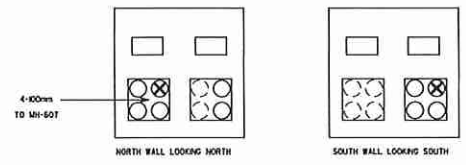
Tour Guide 2003

Imagery Date: 7/28/2017 49°06'00.62" N 121°57'51.34" W elev 34 m eye alt 549 m



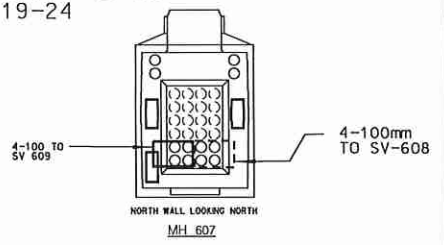
101 ROD DUCTS = 275mE

557 ACCEPTANCE: FPP TO YRRW AND SRDS CO



SV 608 DETAIL
0.5m x 1.5m SERVICE VAULT
- NIS -

24 POS WALL MOUNTED FIBRE PATCH PANEL
STENCIL FPP 100797
SRDS_F5, 117-118
100797, 3-6
D, 7-12
YRRW_F5, 117-118
F100797, 15-18
D, 19-24



48-OXO-LTS-SM-DC
D. 1-12
SRDS_F5, 109-114
D. 19-20
SRDS_F5, 117-120
D. 25-36
YRRW_F5, 109-114
D. 43-44

4 MODIFY SPLICE

101 PULL IN DUCT FROM MH-307 TO ELEC. ROOM VIA SV-308 AND SB-1
24 FIB PSP DSLT
SRDS_F5, 109-110
F103647, 3-6
D, 7-12
YRRW_F5, 109-110
D, 15-24 (325mE)

1 PLACE 24POS WALL MOUNTED FIBRE PATCH PANEL
STENCIL FPP103647
SRDS_F5, 109-110
F103647, 3-6
D, 7-12
YRRW_F5, 109-110
D, 15-24

2 GROUND SHEATH

3 PIGTAILS = 6

LEAVE 10m COIL

LEAVE 20m TAIL

48-OXO-LTS-SM-DC
D, 1-12
(SRDS_F5, 109-114) ← → D, 13-14
D, 19-20
SRDS_F5, 117-120
D, 25-36
(YRRW_F5, 109-114) ← → D, 37-38
D, 43-44
YRRW_F5, 111-114

WARNING
TELUS OPTIC CABLE
24 FIB PSP DSLT
SRDS_F5=YRRW_F5
TO 45504 PETAWAWA
FPP 103647
NW 2682844
DO NOT TOUCH

12 YELLOW TAGS

CONSTRUCTION NOTES:
- CONTACT TELUS IMPLEMENTATION MANAGER MARG MARTONE TO REQUEST SITE ACCESS. PH: 647-837-9131. AFTER SITE ACCESS HAS BEEN GRANTED, YOU MAY CONTACT SITE CONTACT PATRICK TAYLOR, HE IS NOT ONSITE SO WILL HAVE TO BE SCHEDULED TO MEET YOU THERE. HIS PH* IS 604-653-8958
- PLACE FPP ON PLYWOOD ON WALL IN CLOSET IN ROOM 109, NOTE THAT AN EXISTING VOIP TIBOX MAY NEED TO BE REPOSITIONED.

DESIGN: BILL BLAKE	DR:
PH: 604-453-2076	SCALE:
	DATE: FEB, 2018
REFERENCES:	
CLL CODE: CLWBCJY	
FOX ORDER: 2936861	
CONTACT: MARG MARTONE @ 1-647-837-9131	

THE WORKS PROPOSED ON THIS DRAWING SHALL AT ALL TIMES REMAIN THE PROPERTY OF TELUS	
PROPOSED PLACEMENT OF TELUS FIBRE CABLE AND FIBRE PATCH PANEL FOR GCNET/ CANADA BORDER SERVICES AT 45504 PETAWAWA RD.	
SARDIS	
2682844CI	SYSTEM NAME:
SHEET 1 OF 1	
TELUS OUTSIDE PLANT ENGINEERING	11 X 17